

Brickcom

PC Based Network Video Recorder

BRC-64

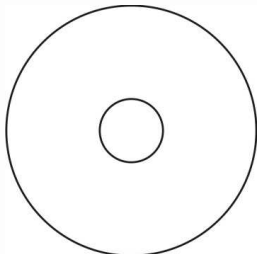
Quick Installation Guide

Quality Service Group

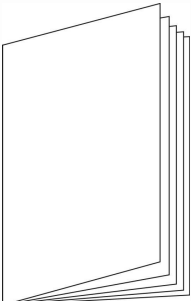


1. Check Package Contents

a. Brickcom Software Kit CD



b. Quick Guide





2. System Requirements

Operating System:

Microsoft Windows XP Home Edition SP2

Microsoft Windows XP Professional SP2

Computer:

IBM PC/AT Compatible

CPU:

Pentium 3GHz or faster

Memory:

1024 MB or more

Monitor:

1024 x 768 pixels or more, 24-bit True color or better

Network Interface:

10/100Mbps Network interface card must be installed

Web Browser:

Microsoft Internet Explorer 6.0 SP2 or higher

Adobe Reader:

Adobe Reader 8.0 or higher

Audio:

The audio function will not work if a sound card is not installed in the PC. Audio may be interrupted depending on network traffic.

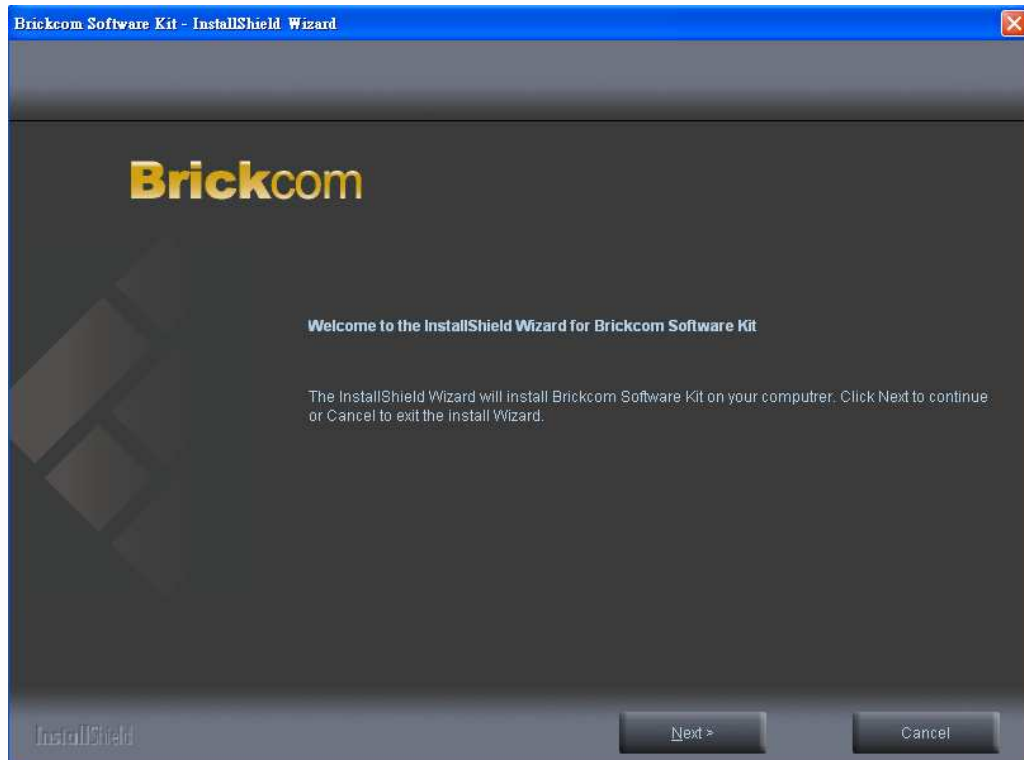


3. Installation

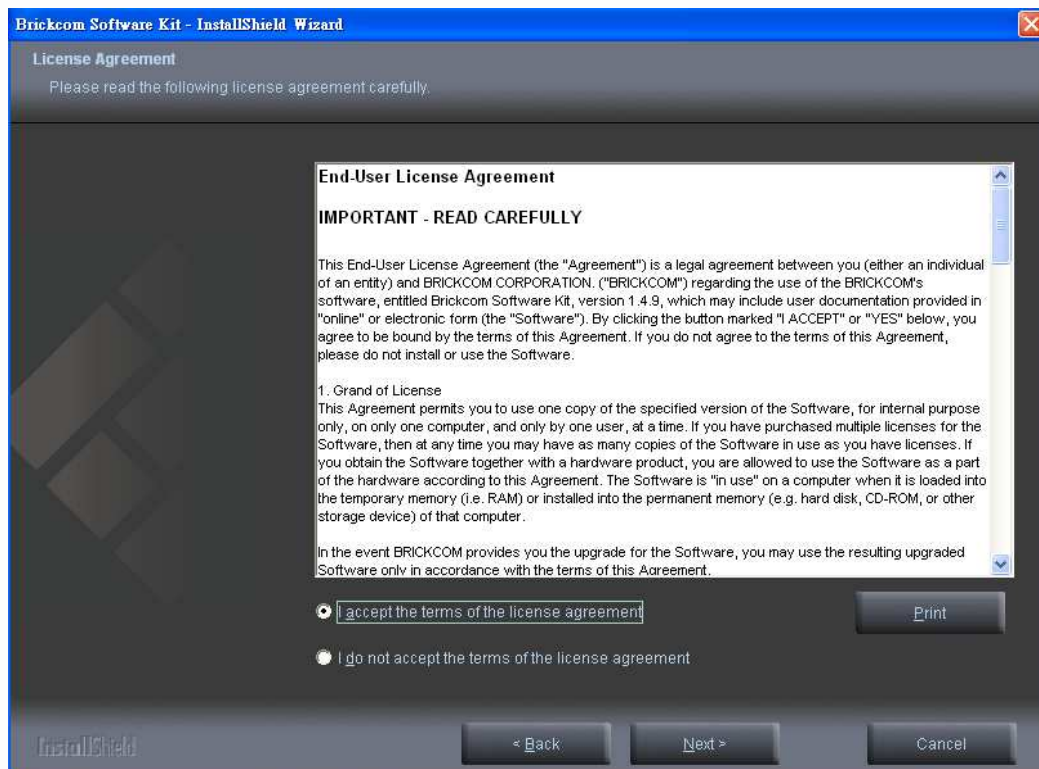
1. Insert the Installation CD into the CD-ROM driver. Run Auto-run Tool directly from the CD-ROM to start the installation. When installing the Brickcom software kit for the first time, select a desired language for the interface. The available languages are listed in the scroll box. Click “Install” and follow the steps to install the easy configuration wizard on the desired computer.



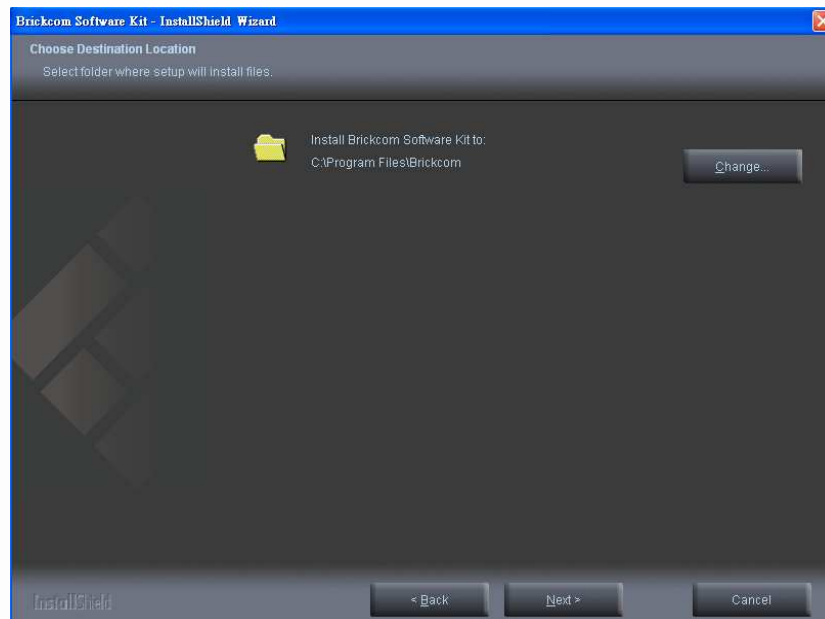
2. In the Install Shield Wizard dialog box, click <Next> to continue.



3. Read the End-User License Agreement and check the option "I accept the terms of the license agreement". Click <Next> to continue.



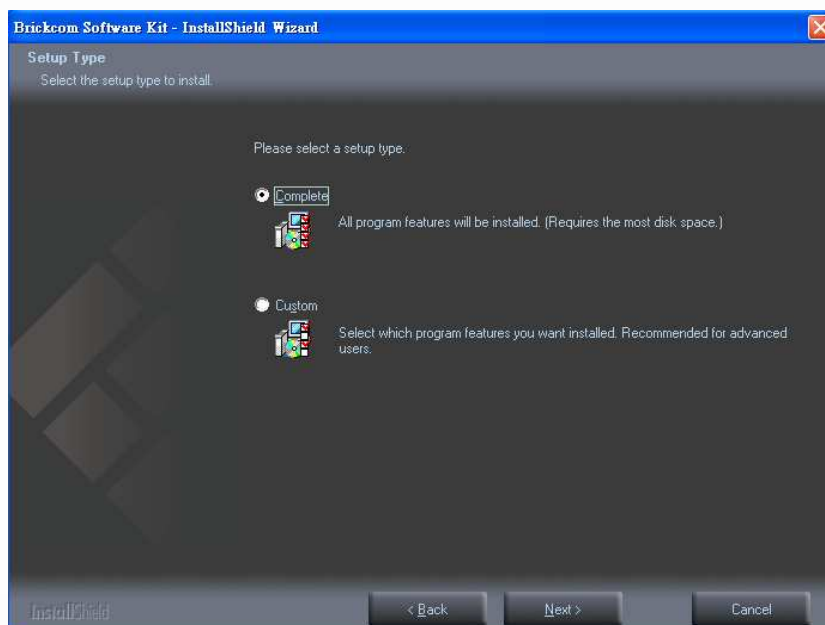
4. Select the appointed folder where setup will install files to. Click **<Change>** to modify the installation directory. Click **<Next>** to continue.



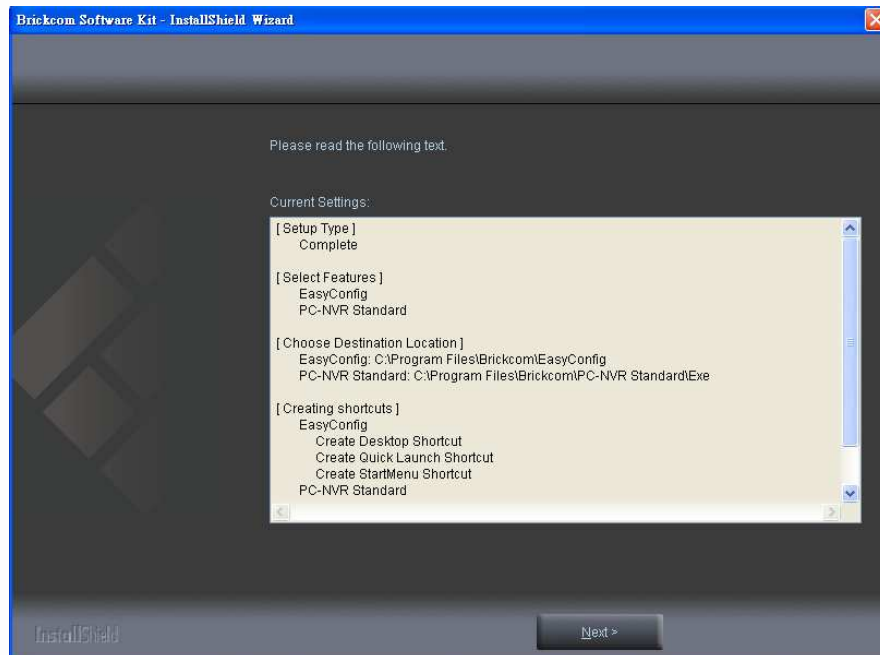
5. Select either "Complete" setup type or "Custom" setup type to install the system.

a. **If COMPLETE SETUP TYPE is selected:**

- i. **All program features** will be installed into the default directory. Check the option "**Complete**" and then click **<Next>**.

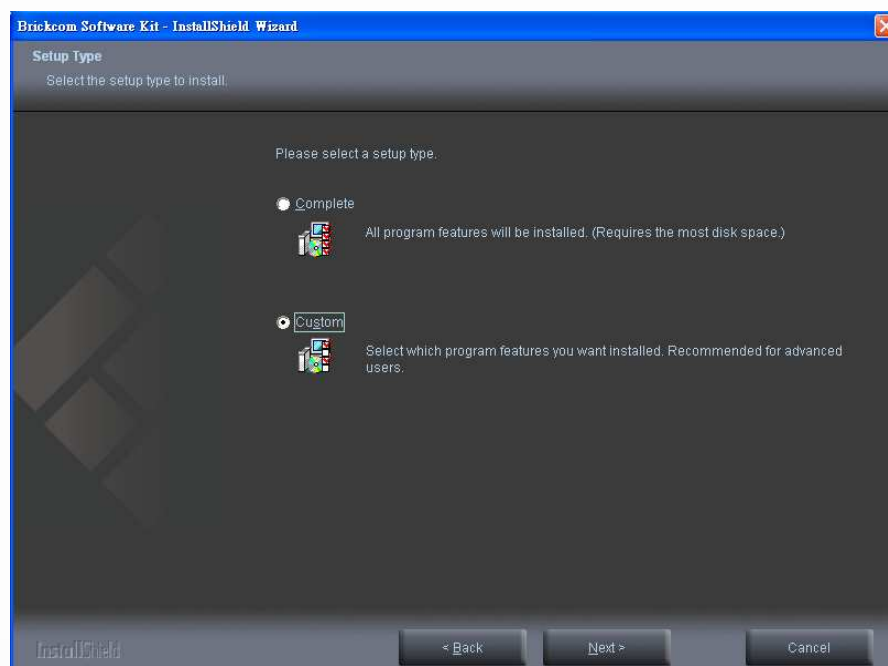


- ii. The installation information will be displayed. Click <Next> to continue.

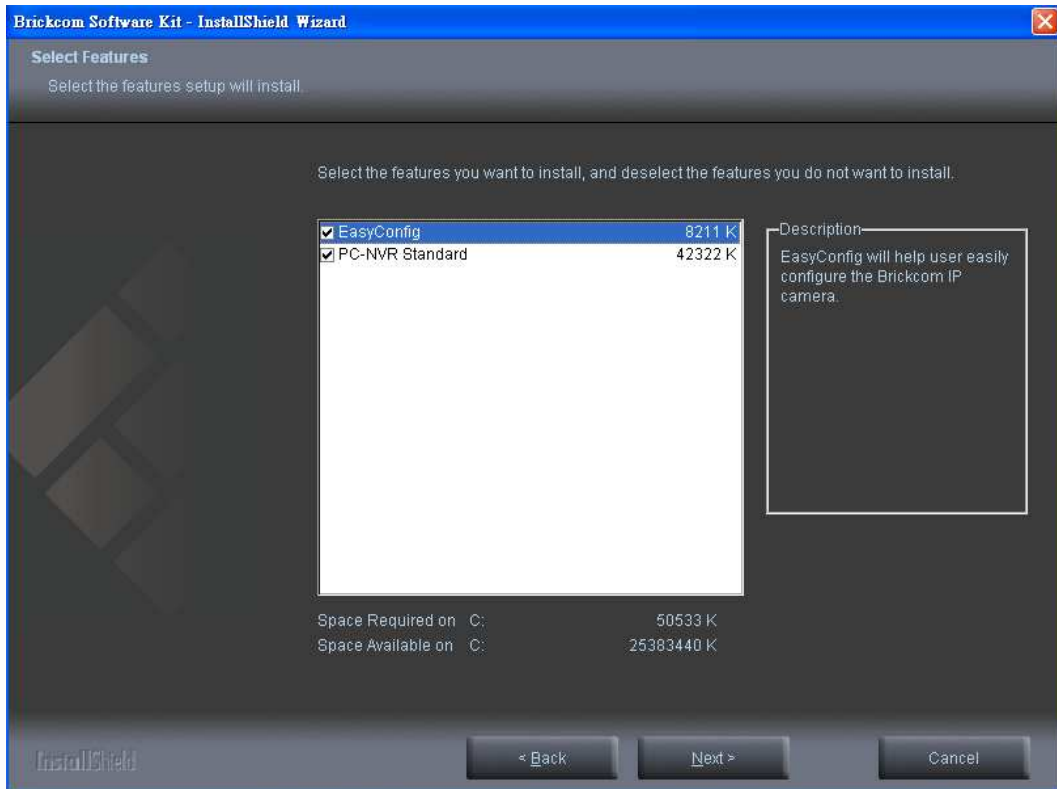


b. If CUSTOM SETUP TYPE is selected:

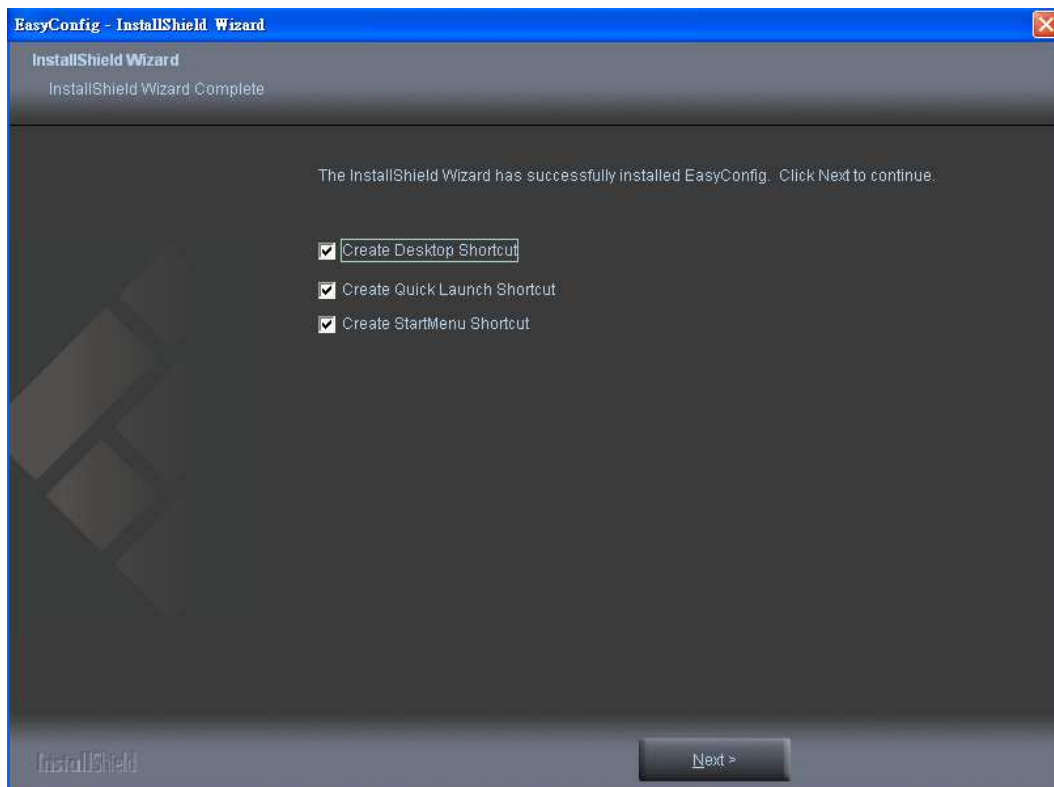
- i. This option is recommended for advanced users. It can be used to install the system to a preferred directory or to select specific program feature(s).
- ii. Check the option “**Custom**”, and then click <Next>.



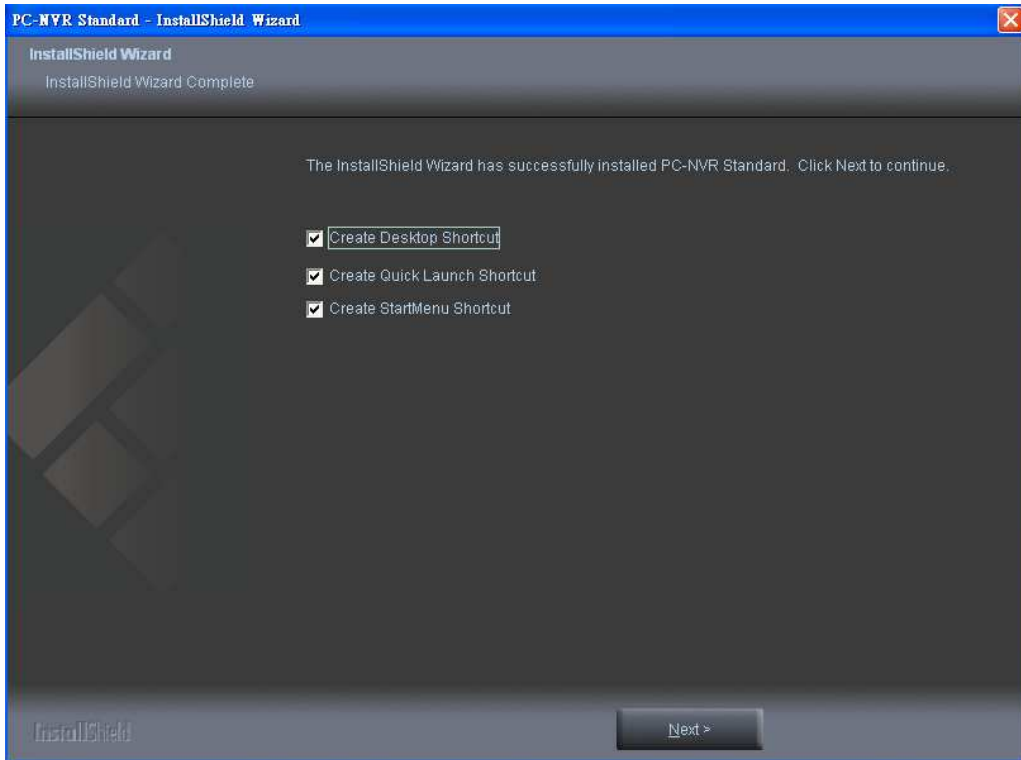
iii. Select the features to install. Click <Next> to continue.



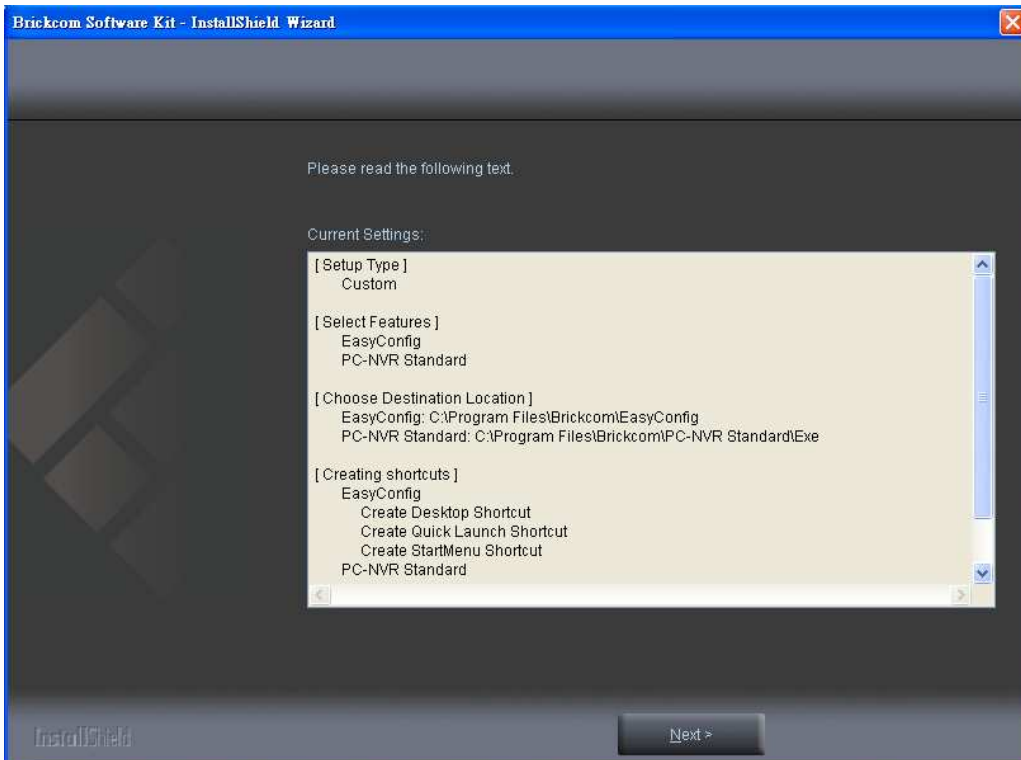
iv. Select to create EasyConfig shortcuts. Click <Next> to continue.



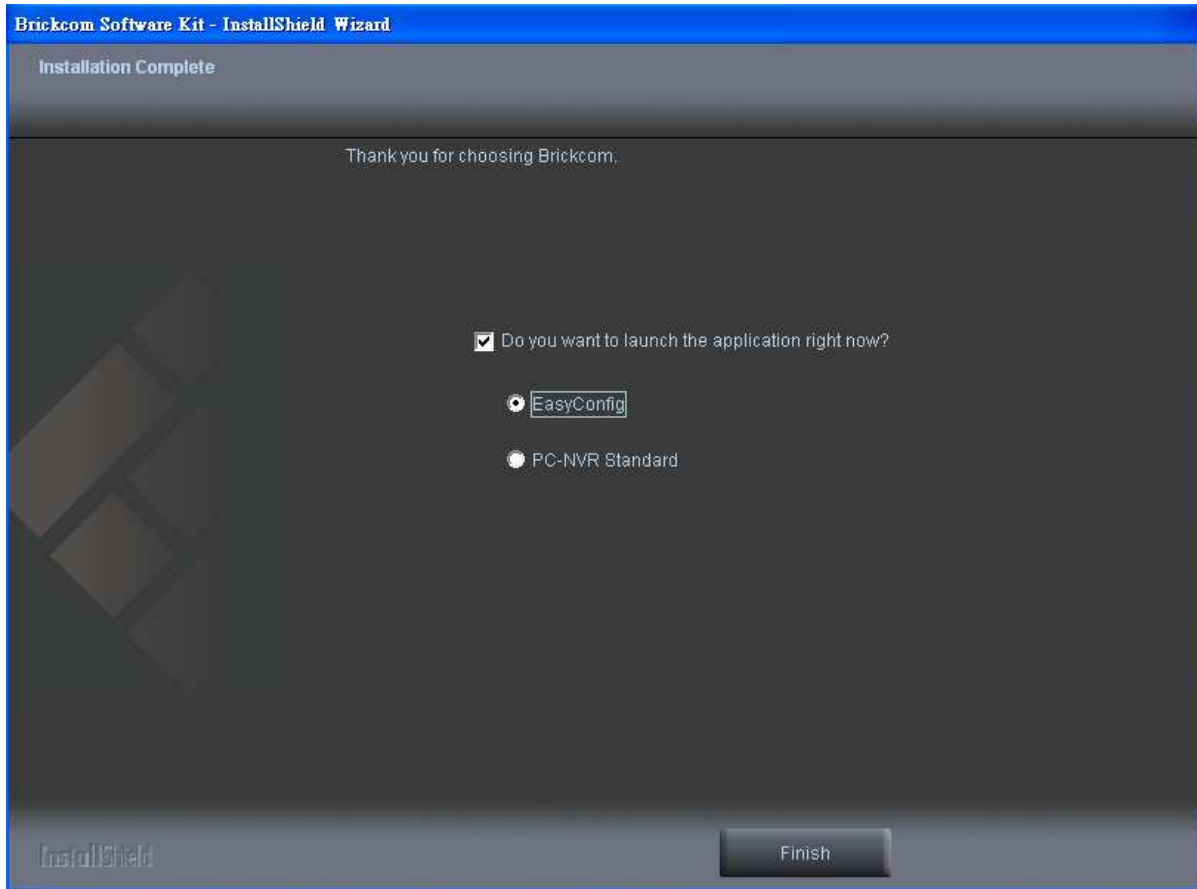
- v. Select to create the PC-NVR Standard shortcuts. Click <Next> to continue.



- vi. The installation information will be displayed. Click <Next> to continue.



6. Select either EasyConfig or PC-NVR Standard to launch. If the PC-NVR program is launched, please see page 20.



EasyConfig

To launch EasyConfig, select EasyConfig from the start menu. If complete setup type was used in software installation, an EasyConfig icon was installed on the desktop. Double click to open the icon.



If custom setup type was used in software installation and an EasyConfig icon was not installed on the desktop, the program should be installed under C:\Program Files\Brickcom\EasyConfig unless the program was saved to a preferred directory.

1. Click <Start> to continue. The program will automatically search for the network camera in the intranet.

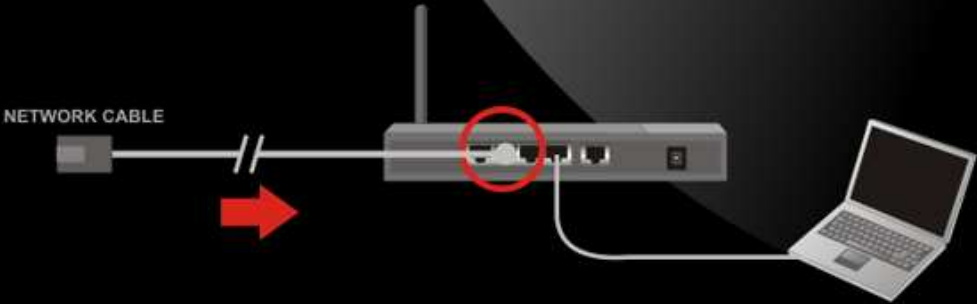
Note: Check <Skip the hardware installation guide> to skip the hardware connection checking. If the user wants to check the hardware installation settings, do not check the option box.



Brickcom

Connection

1 Plug one end of the supplied network cable into your network switch or router.



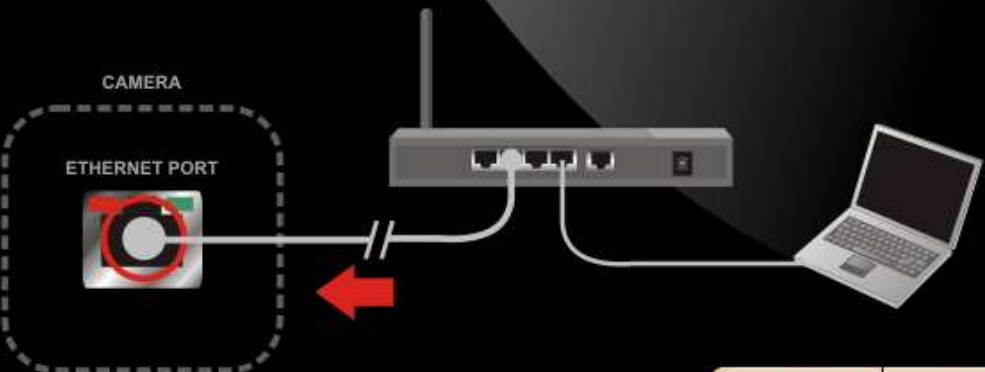
NETWORK CABLE

Diagram illustrating step 1: A network cable is being plugged into the Ethernet port of a network switch or router. The router is connected to a laptop. A red circle highlights the Ethernet port on the router, and a red arrow points to the cable being inserted.

Navigation buttons: Previous (left arrow) and Next (right arrow).

Brickcom

2 Plug the other end of the supplied network cable into the camera's Ethernet port.

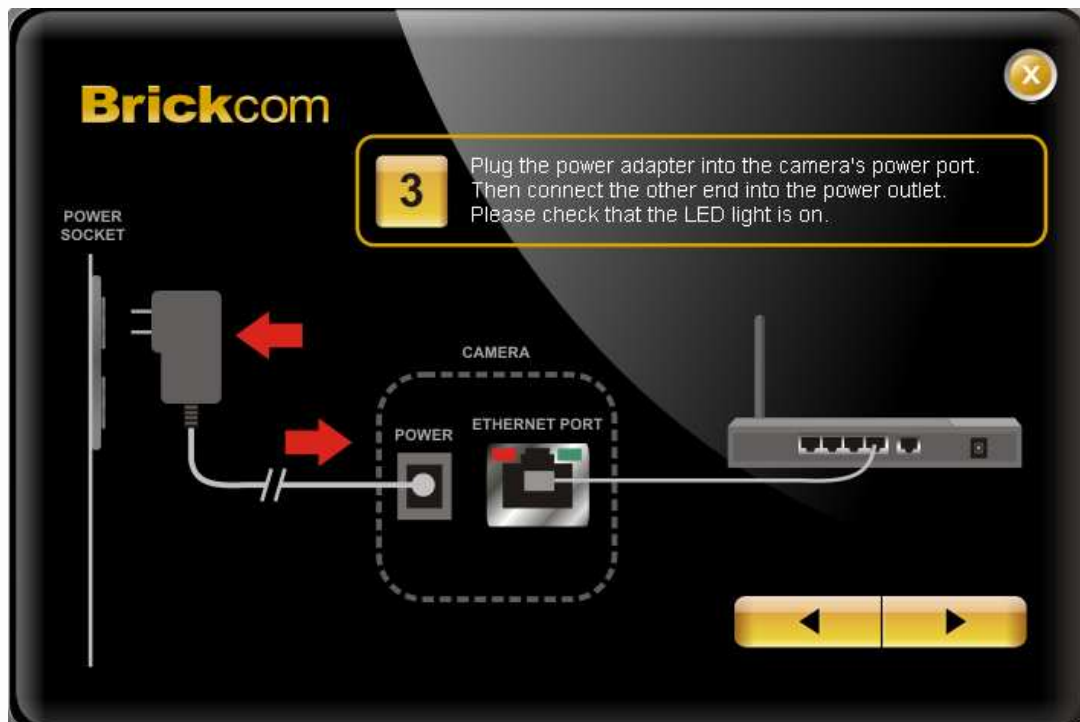


CAMERA

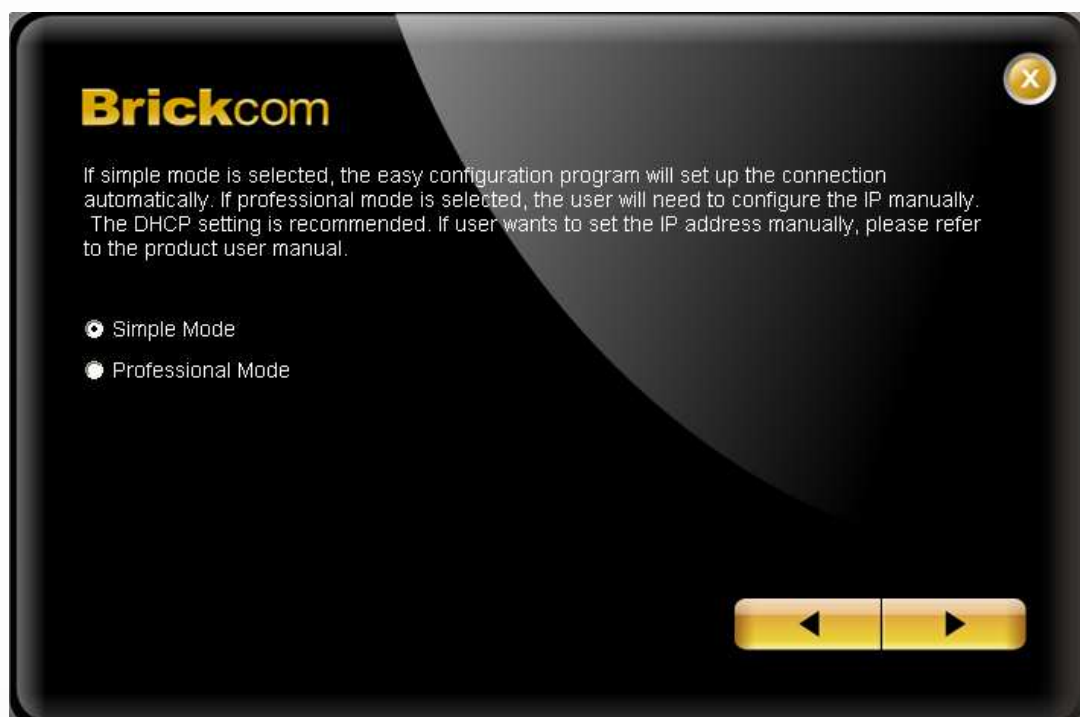
ETHERNET PORT

Diagram illustrating step 2: The other end of the network cable is being plugged into the Ethernet port of the camera. The camera is connected to a router, which is connected to a laptop. A red arrow points to the camera's Ethernet port.

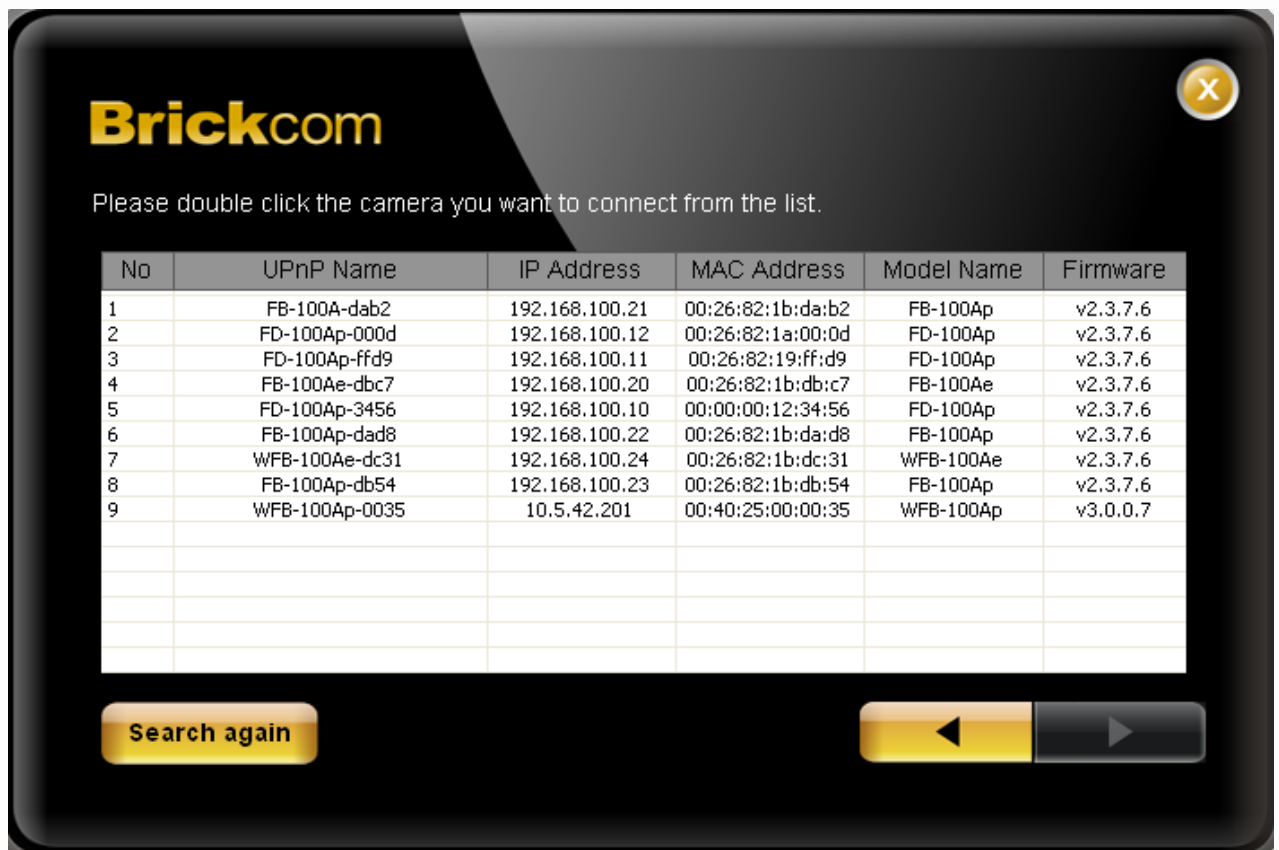
Navigation buttons: Previous (left arrow) and Next (right arrow).



2. The user can either select simple mode or professional mode for the network camera IP setting. If the simple mode is selected, the easy configuration program will set up the connection automatically. If the professional mode is selected, the user will need to configure the IP manually.



3. There may be many Network Cameras in the local network. The user can differentiate the Network Cameras with the UPnP name. Double click on the desired Network Camera from the survey list to connect.



4. Enter the username and password of the camera. For first time use, the default username and password are assigned as "admin/admin."



5. For selecting the IP address settings, the user can either select <Settings remain the same>, <Automatically obtain an IP Address (DHCP)> or <Set IP Address configuration manually>. The DHCP setting is recommended. If the user wants to set the IP address manually, please refer to the product user manual.



- a. If <Set IP Address configuration manually> is selected, the following pages will be displayed.



Brickcom

Enter the Static IP Address to configure IP Camera.

IP Address

Subnet Mask

Gateway

DNS1

DNS2



6. If the network camera supports the EasyLink™ function, the following page **will be** displayed. Otherwise, this page **will not** be shown. *Click <Skip> to skip this setting.



Brickcom

Easy Link Settings

You can use EasyLink Settings to connect to the IP camera without knowing the IP address.

Enable

Domain Name: .mybrickcom.com

Refresh Time:

Skip ◀ ▶

EasyLink™ enables network cameras to come with everything necessary to quickly add a surveillance camera to a home or small office network. To view what the camera is seeing, simply log on to mybrickcom.com, choose the device's domain name which was created by the user, and start viewing. There is no need to configure the router to open up ports or remember hard-to-memorize Internet addresses.

As a mybrickcom-enabled device, the camera can be accessed anytime, anywhere by simply logging on to the mybrickcom website and selecting the camera.

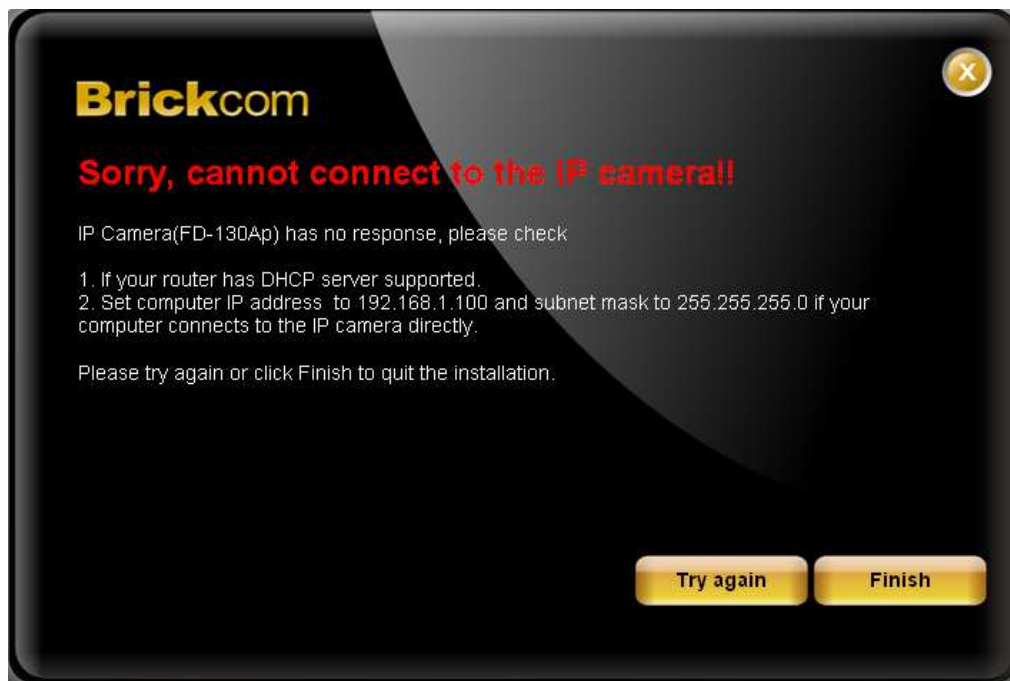
Check the option box to enable EasyLink™. Enter a domain name whose length must be between 5-32 characters.

For Refresh Time, select a desired amount of time from the drop-down menu to confirm the connection status.

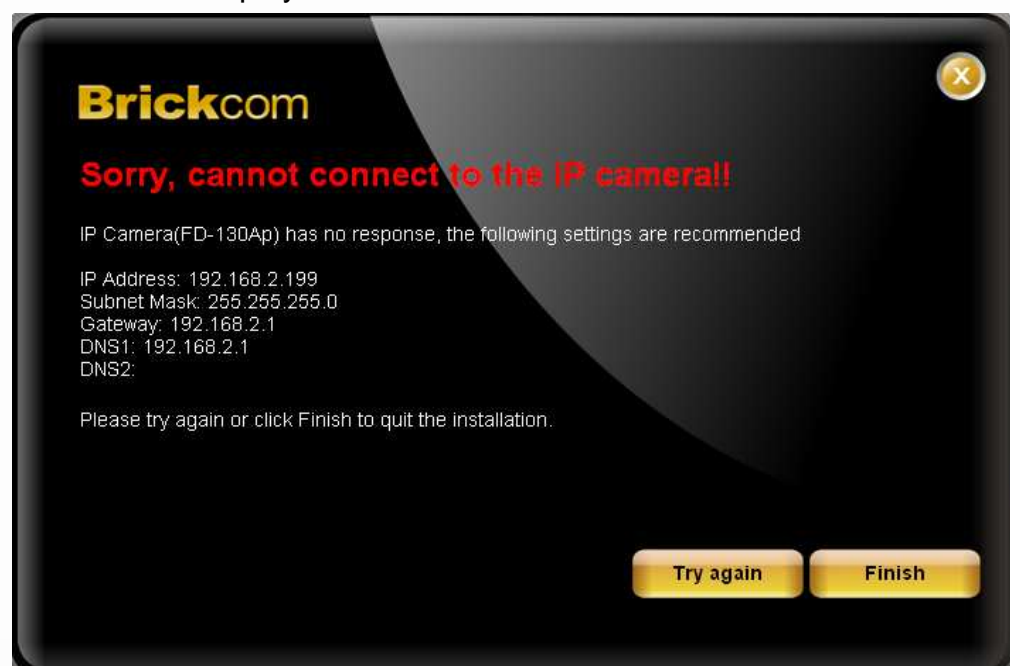
When finished, click the arrow button to continue.

7. When the IP address settings have been made, the screen will either display a successful or failed connection message. If the connection failed, the user can either try again or quit the installation.

- a. If the DHCP IP address setting was selected, the failure page will be displayed as below:



- b. If the Static IP address setting was selected, the failure page will be displayed as below:



- c. If the connection was successful, the user will see the message:
Congratulations, the installation of the camera is complete.

When this window is displayed, the user can click <X> in the top right corner of the screen to close the installation window, click <PC-NVR> to start the PC-NVR program or, click <Live View> to view the live video from the connected IP camera. If the user starts the PC-NVR program, see page 20, or refer to the PC-NVR user manual.



Start with PC-NVR

To launch PC-NVR Standard, select PC-NVR Standard from the start menu.

If complete setup type was used in software installation, a PC-NVR Standard icon was installed on the desktop. Double click to open the icon.



If custom setup type was used in software installation and a PC-NVR Standard icon was not installed on the desktop, the program should be installed under C:\Program Files\Brickcom\PC-NVR Standard/ PC-NVR Standard unless the program was saved to a preferred directory.

1. For first time use, the user name and password are assigned as **“admin/admin”**. Click <OK> to login.

*Check <Save user name and password> to save time when the PC-NVR starts.



Main Window



The usage and function of each button will be briefly described below:



Click this button to search for UPnP devices within the LAN.



Volume increase/Volume decrease



Volume on/off



Live View - Click on the <Live View> icon to view live video feed.

Note: After viewing recorded video, click this button to return to the live mode.



Settings - Click on the <Setting> icon to adjust the camera, file path, event, sequence, and login settings.



Schedule Record - Click on the <Schedule record> icon to schedule recording times for cameras on the network.



Playback - Click on the <Playback> icon to view recorded video stored in the HDD of the connected IP camera.



Event - List of system and camera event logs.



Snapshot - Click on the <Snapshot> icon to save a snapshot of the current window(s).

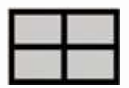


Emap - Click on the <Emap> icon to open the E-Map program. The E-Map is a program that allows the user to illustrate the positions of the cameras on a self selected image.

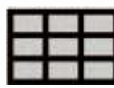


Lock - Click on the <Lock> icon to lock the PC-NVR without closing the program. To re-access the PC-NVR, the user will be prompted to enter the username and password.

Display Modes



2X2



3X3



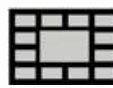
4X4



8 division



10 division



13 division



5X5



6X6



7X7



8X8



Sequence



Full Screen




Resort Camera

Display Modes - to view the image in a multiple window mode. The selections include 1-window, 4-window, 9-window, 16-window, 8-window, 10-window, 13-window, 25-window, 36-window, 49-window, and 64-window modes.

Sequence - This function is used to set the display sequence.

Full Screen - Enlarge the viewing window to fit full screen. Hit <Esc> to exit.

Resort Camera - Resort Display Window Grids; to rearrange camera images of connected sites in order.

1. Click  <UPnP Search> button on the control panel to start searching for UPnP devices within the LAN.



2. Click and select the Network Camera from the survey list. Enter the user name, password and select the stream type from the drop-down menu. For first time use of an IP camera, the user name and password are "admin/admin".



3. The PC-NVR allows the user to assign any camera in the site tree to any grid in the main window.

Step 1: Selects the camera to be viewed from the site tree.

Step 2: Drag and drop the selected camera into the window to view.

